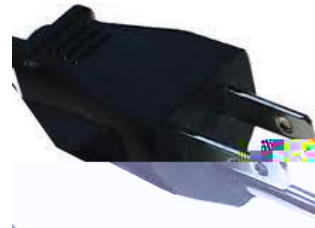


Health and Safety Inspections: Frequently Asked Questions

- Wall
- Decorations
- Electronics
- Appliances
- Miscellaneous



ELECTRONICS



What is a

The term **multi-outlet wall adapter** is used to refer to multi-outlet wall adapters. The most common versions of these adapters are used for 3 or 6 outlets:



Unlike power strips, many of these adapters are not grounded, and most do not include a built-in surge protector. As a result, these adapters create serious fire hazards when they are maxed out with plugs, and they are prohibited from residence hall space.

Important Exception: Some newer types of these adapters do include surge protectors, and are therefore approved for our residence halls. If you are unsure of the appropriateness of your item, please see an RA (Residence Advisor) or AC (Area Coordinator).

Can I have Christmas

APPLIANCES

What is the

(for boiling water), some coffee pots, and George Foreman grills, therefore are allowed in these kitchen areas.

Will I get in trouble if I am given a violation as a result of a safety inspection?

Any violations which are found during an inspection will be documented by the appropriate staff. The residents who are responsible

